



Lowara Servitec 30

VACUUM SPRAY DE-AERATION SYSTEM

Lowara Servitec 30

Lowara Servitec automatically eliminates air from heating and chilled water systems in a quick and efficient manner.

Removing air from sealed heating and chilled water systems can be a long arduous and costly process, installing an automatic de-aeration unit will ensure the system runs quietly and efficiently in all areas of the building.

The Lowara Servitec 30 is designed to operate with systems up to 8m³ but can be extended to cover 12m³ systems with a maximum system pressure of 3 bar. A Lowara pressurisation unit should be used to make up the system water content and monitor for low/high pressures. On small systems where low/high pressure interlocks are not required the Servitec can control a basic fill unit in place of a full pressurisation unit.

For larger system content/pressure please call our sales office.

Lowara Servitec 30

'Servitec' systems have proven themselves in thousands of stations in residential buildings, in the industry and the district heating for more than a decade.

The high level of effectiveness and reliability of the 'servitec' principle was demonstrated through numerous measurements performed by the Technical University of Dresden.

Thanks to persistent and continuous development work Lowara are able to offer a system that uses the method that is based on the spraying of system water in a special vacuum tube for a new concept. The vacuum space is now located directly inside the Lowara pump housing. The evolving product is designed for the smaller end system in an economic and functional way.



Lowara 'servitec 30'

Ensures utmost effectiveness even in confined spaces.



Advantages:

- Fully automated, central de-aeration.
- Optimum operation of the diaphragm pressure expansion vessels.
- No flow noises caused by air.
- Minimizing air problems with circulation pumps.
- Optimum, improved heat transfer on the heating surfaces and in the boiler/chiller.

Lowara 'servitec 30'

Back view during deaeration operation.

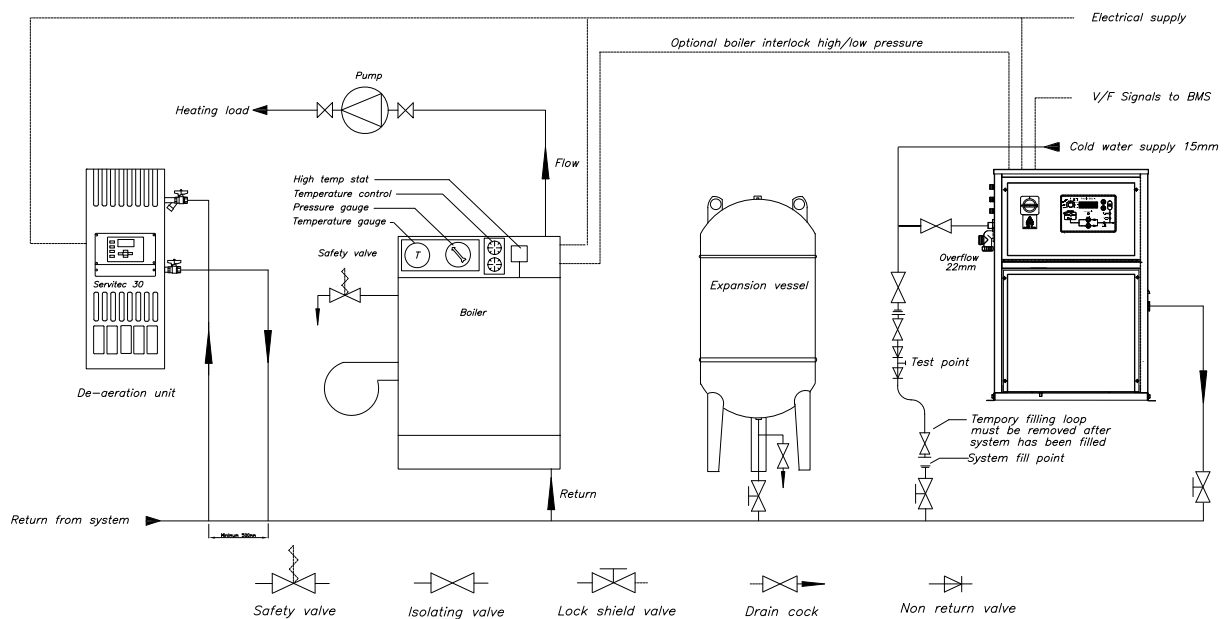
Lowara 'servitec 30' The advantages of a Packaged set.

The Servitec unit is extremely easy to install and set up, two pipe connections to the system return line and a power supply that's it, installed.

Initial setup in level control mode is also straightforward; follow the step by step instructions and the set will be up and running in no time. The compact dimensions of the Servitec means that it will fit in most plant rooms taking up a minimal amount of valuable space.

No Need to fit any other type of air separator in the system however an auto air vent situated at the top of the system will help evacuate air at the initial filling stages.

Typical installation:



Technical data:

- Max operating pressure 8 bar
- Max operating temperature (Return line) 70°C
- Working pressure 0.5-3.0 bar
- Max ambient temperature 45°C
- Degree of separation Dissolved gas <90
- Degree of separation free gas 100%
- Maximum water Glycol mix 50%
- Max system volume 8M3 (Can be extended to cover system volumes up to 12m³)
- Max system volume water/glycol 2M3
- Dimensions in mm 255W x 280D x 650H
- Weight 13Kg
- Connections G1/2
- Electrical connection 230-1-50 (2 wire + earth)
- Power requirement 470W
- Control unit protection IP65
- Energy consumption per day 0,040KWh (interval operation)
- Fault contact volt free max load 230V 4A (fail safe)

About Xylem Applied Water Systems

Xylem's Applied Water Systems is known for its systems and applications expertise across the building services, general industrial, food and beverage, marine and agricultural markets. Serving the global marketplace with its leading portfolio of innovative and energy-efficient products and brands, AWS delivers on the challenge to solve the world's most critical water issues. For more information on AWS, please visit <http://www.xylemappliedwater.com>

Xylem

Xylem /'zīləm/

- 1) The tissue in plants that brings water upward from the roots.
- 2) A leading global water technology company.

We're 12,000 people unified in a common purpose: creating innovative solutions to meet our world's water needs. Developing new technologies that will improve the way water is used, conserved, and re-used in the future is central to our work. We move, treat, analyze, and return water to the environment, and we help people use water efficiently, in their homes, buildings, factories and farms.

In more than 150 countries, we have strong, long-standing relationships with customers who know us for our powerful combination of leading product brands and applications expertise, backed by a legacy of innovation. For more information on how Xylem can help you, go to xylem.com.

www.xylem.com



Lowara UK Limited

Millwey Rise Industrial Estate
Axminster, Devon EX13 5HU - UK
Tel: 01297 630230
Fax: 01297 630270
e-mail: lowaraukenquiries@xylem.com
<http://www.lowara.co.uk>
<http://www.xylem.com>

Xylem Water Solutions Ireland Limited

50 Broomhill Close
Airton Road
Tallaght - Dublin 24
Tel. (+353) 01 4524444
Fax (+353) 01 4524795
e-mail: lowara.ireland@xylem.com
<http://www.lowara.ie>

Lowara is a trademark of Xylem Inc. or one of its subsidiaries.

© 2011 Xylem, Inc.

Lowara reserve the right to make modifications without prior notice.

Code: UKLIT0102 P11/12

