

Extended
Range



PREFIX Packaged Pressurisation Sets

AUTOMATIC MAKE-UP UNITS FOR SEALED HEATING AND CHILLED WATER SYSTEMS.

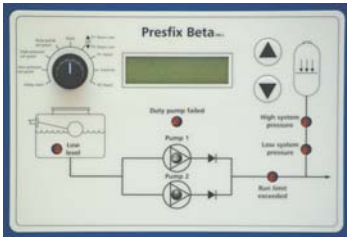
 **LOWARA**
a xylem brand



Prefix Beta MK 2 microprocessor single & twin pump unit

Heating system

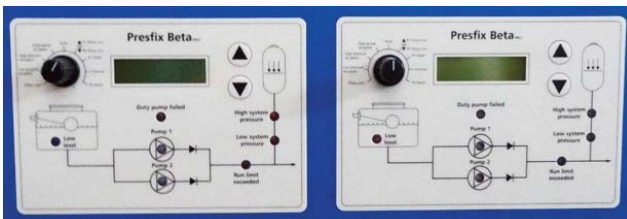
Chilled water system



Display panel details.

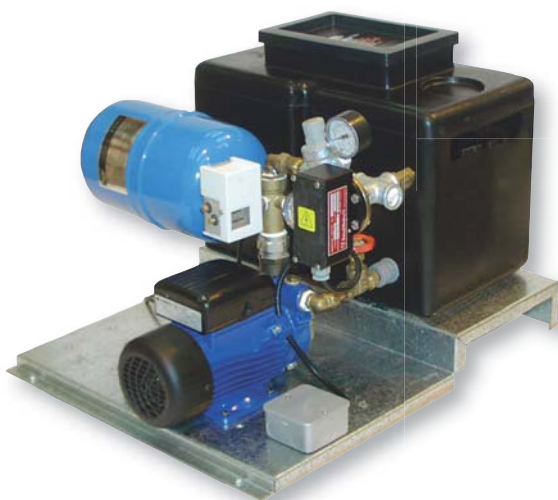


Prefix Beta MK 2 dual system



Dual display panel details.

Combined Heating and Chilled water systems



Prefix Alpha single pump unit

Sealed system benefits

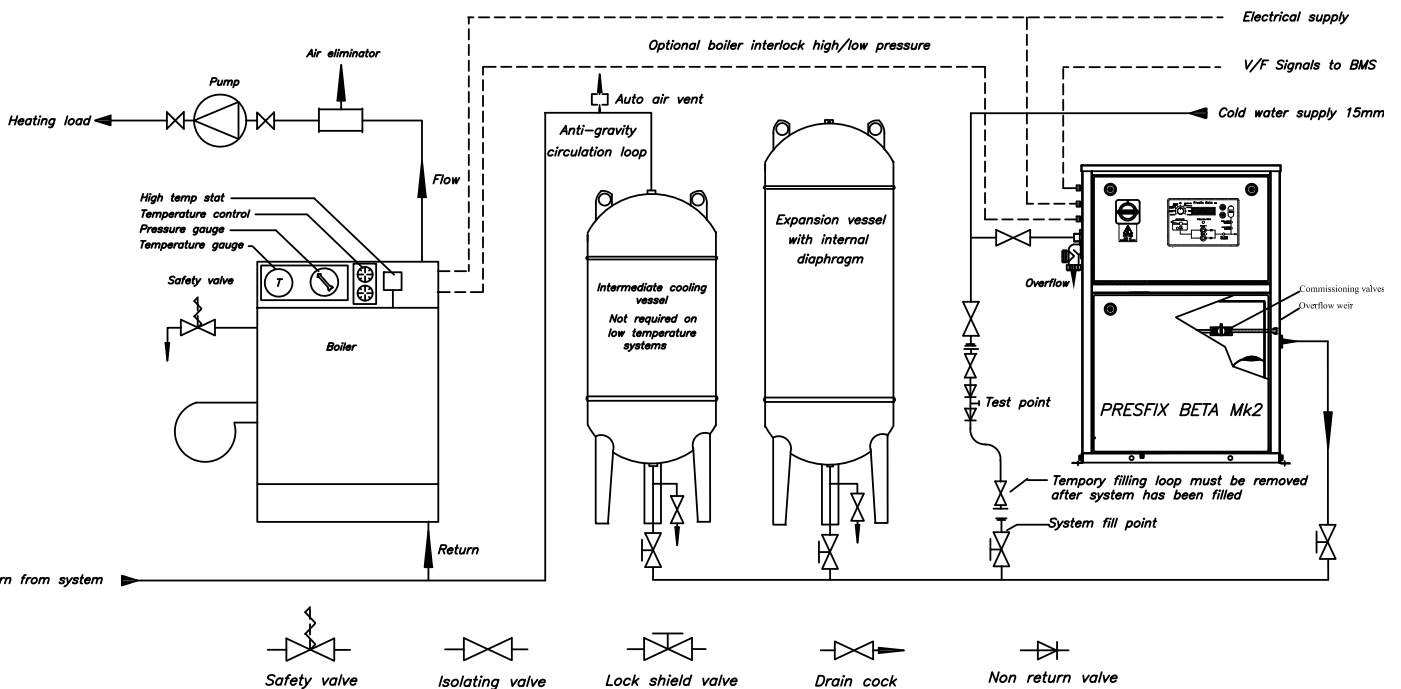
In today's demanding environment nearly all heating and chilled water circulating systems are designed to operate in sealed networks.

The main benefits over previous systems which used feed and expansion tanks to accommodate expanded water are many, large volumes of water are no longer required to be stored at the top of the building. Expansion vessels can now be used in place of the storage tanks and these can be placed anywhere in the building, usually in the basement where the weight is not such a problem. The Feed and expansion tank being open to atmosphere allowed water to evaporate making unnecessary demands on this precious resource.

Sealed systems reduce corrosion to an absolute minimum by sealing the system content from atmosphere, and only adding fresh water to replace loses through leakage.

Sealed systems also offer the possibility of operating at higher temperatures if required (Max 120°C) which permits lower circulation rates, smaller pumps and reduced pipe work dimension with obvious cost savings.

Pressurisation system guide Low-Medium temperature typical layout



Prefix Beta dual unit

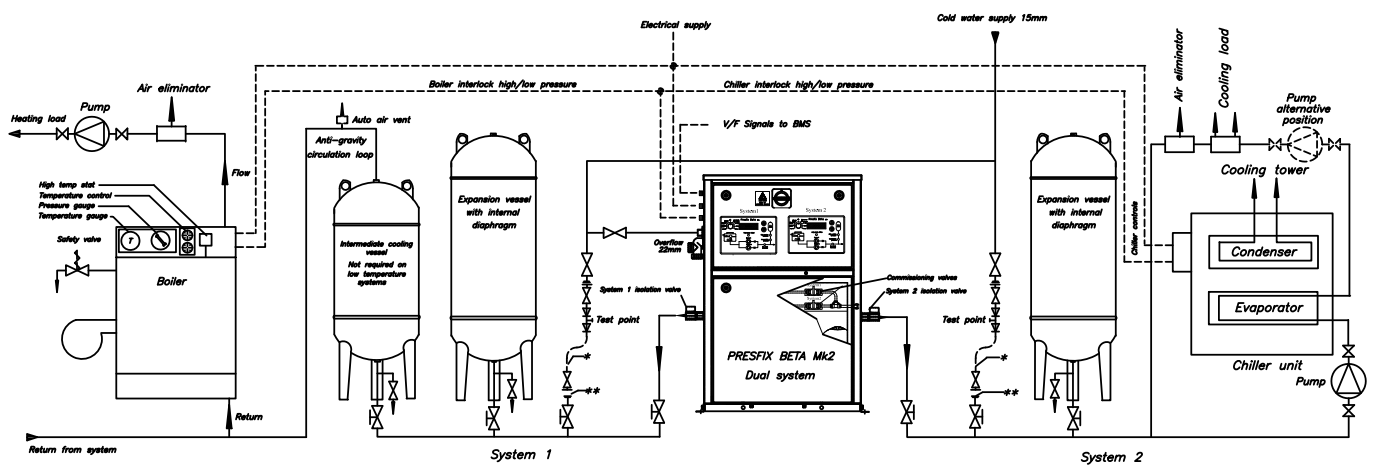
Prefix Beta dual pressurisation sets bring the benefits of managing two independent systems from a single unit. The unit contains two individual display screens so each system can be controlled and monitored separately providing both systems operate at the same fill pressure which should generally be the case as the fill pressure is based on the building static height. All other set points can be independently set for each system.

All Prefix Beta Dual system units are supplied as twin pump sets and are available in three pressure ranges 2.8-5.5-8.0 bar.

Each pump is available to both systems so each system has a duty and standby pump available to it. If one pump fails then the standby pump will be available to both systems.

All the control features and specification are the same as the standard two pump Prefix Beta details.

Pressurisation dual system guide Low-Medium temperature typical layout for heating and chilled water systems



* Temporary filling loop, must be removed after filling system
 ** System fill point



Application

Prefix pressurisation units are designed to replace water that has been lost through system leakage and to maintain the system design fill pressure in sealed heating and chilled water systems in accordance with BS7074 parts 1, 2 and 3.

Prefix units also provide safety circuits locking out the boiler / chiller in the advent of high/ low pressures occurring. Expanded water is accommodated in membrane vessel/s that are supplied separately and normally installed alongside the Prefix unit.

Prefix units are perfect for either domestic or industrial environments. Two levels of sophistication are offered along with three pressure ranges.

Both levels provide volt free contacts that can be used to interface with either a Business Management System or any other type of monitoring system.

Prefix units have flow limiting devices to help prevent plant rooms from flooding in the advent of system pipe/fitting failure.

Control features

Prefix Beta MK 2 microprocessor (enclosed)

- Mains door interlocked disconnect switch.
- Auto/Manual/Off selector switch.
- Back lit digital display.
- Control panel section IP 54.
- MCB protected motors.
- Simple set point adjustment.
- Parameter lock.
- Remote inhibit.
- Delay start.
- Exercise regime.
- Break tank low water monitoring.
- Transducer controlled.
- High/Low pressure contacts for boiler/chiller interlock.
- Anti-bounce internal vessel 2lt electronically assisted.
- Isolating valves on each pump.
- Hours run for each pump.

Additionally twin pump units have:

- Automatic duty pump rotation with omission of tripped or failed pumps.
- Duty pump fail with auto change over to stand by pump.

LED indicators for:

- Pump run each pump.
- Pump trip each pump.
- Low pressure.
- High pressure.
- Duty pump failed.
- Excessive run time.
- Break tank Low water.
- Back lit display provides indication of power on.

Volt free contact for:

- Pump run each pump.
- Pump trip each pump.
- High pressure.
- Low pressure.
- Excessive run time.
- Break tank low level.
- Duty pump failed (two pump units).

Prefix Alpha (open frame)

- Switched mains isolator with neon indicator
- Fuse protected motors.
- System pressure controlled by PRV.
- Pump pressure controlled by pressure switch.
- Optional High/Low pressure switch for boiler/chiller interlock.
- Anti-bounce internal vessel 5lt.

Expansion vessel sizing

Vessel sizing calculations should be carried out in accordance with BS7074.

Details of calculating method can be obtained from Lowara UK or we will be happy to calculate the required vessel size for you if you can provide the following data.

1. Static height above pressurisation unit.
2. System content (volume) if unknown boiler power (Kw) can be used to estimate system content.
3. Flow and return temperatures.
4. Glycol content (%).
5. Final working pressure.

Applied standards

- Safety Directive. 2006/42/EC.
- UK Health and Safety Requirements. 2008No.1597
- Water supply (water fittings) regulations.1999.
- Simple pressure vessel directive 87/404/EEC.
- Code of practice for heating and chilled water systems. BS7074 Parts 1, 2 and 3.

Specification

Base/enclosure

Open frame units have base plates manufactured from 14SWG galvanised steel and are suitable for floor mounting.

Enclosed units are manufactured from powder coated steel and have individual sections for electrical equipment and hydraulic equipment.

These units are suitable for either floor or wall mounting.

Pumps

Various pump types are used across the range, 2.8 bar units use Diaphragm pumps with Polypropylene heads and EDPM diaphragms and valves. All other ranges use Horizontal Peripheral types with Bronze/composite bodies and impellers with self priming seals.

Break tank

Manufactured from Polyethylene with an 18lt active capacity complete with weir and clip tight lid. Ball valve 15mm to BS1212 part 2 constructed to give a type AB air gap in accordance with the water regulations 1999. Overflow 22mm (plastic).

Pipework

Copper 15mm (Prefix Alpha)
Nylon 4 -10mm (Prefix Beta)

Internal vessel

Fixed diaphragm 2/5lt steel construction complying with BS4814

Electrical specification

Supply voltage: 230V 50Hz 1Ph
For other supply voltages contact our sales office.
Volt free contact rating: 50V AC 3A

Standard range

Prefix Beta MK 2 (Cabinet)

Maximum fill pressure	Single pump Unit	Twin pump Unit	Kg	Motor Size	Input Current	Pre-fuse
2.8 bar	UKBETA100HL28/B		36Kg	0.20kW	1.0A	10A
2.8 bar		UKBETA200HL28/B	45Kg	0.20kW	1.0A	10A
2.8 bar Dual System		UKBETA200DS28/B	45Kg	0.20kW	1.0A	10A
5.5 bar	UKBETA100HL55/A		37Kg	0.37kW	3.2A	10A
5.5 bar		UKBETA200HL55/A	46Kg	0.37kW	3.2A	10A
5.5 bar Dual System		UKBETA200DS55/A	46Kg	0.37kW	3.2A	10A
8.0 bar	UKBETA100HL80/A		39Kg	0.75kW	6A	10A
8.0 bar		UKBETA200HL80/A	50Kg	0.75kW	6A	10A
8.0 bar Dual System		UKBETA200DS80/A	52Kg	0.75kW	6A	10A

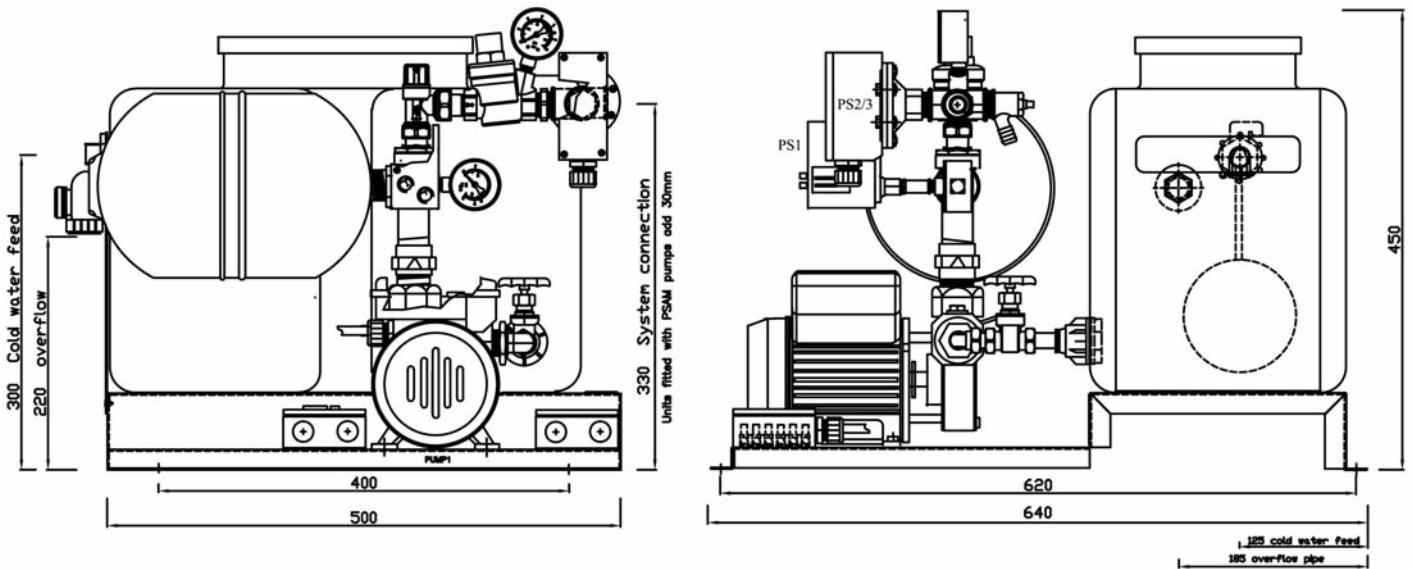
Prefix Alpha (Open frame)

Maximum fill pressure	Single pump Unit	Twin pump Unit	Kg	Motor Size	Input Current	Pre-fuse
5.5 bar		UKALPHA100HL55	29Kg	0.37kW	3.2A	10A
5.5 bar*		UKALPHA100BS55	28Kg	0.37kW	3.2A	10A

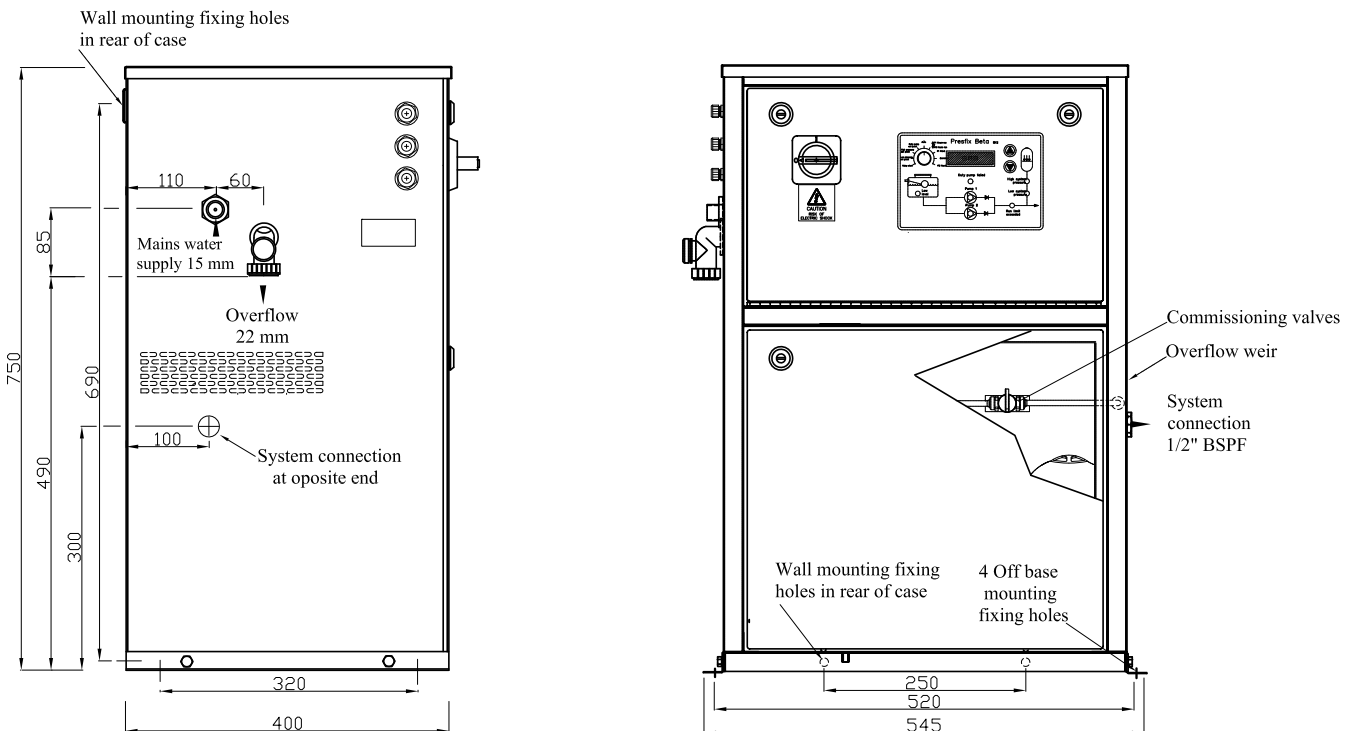
All the above units contain high quality bronze/composite head pumps to help eliminate seizure due to infrequent operation. All the above units include High/Low pressure contacts to interlock with the boiler/chiller unit except those marked with an *. Other options include: microprocessor/transducer controlled units and specialised systems for large volume storage. **Please contact our sales office for details Tel. 01297 630230. Fax. 01297 630270. E-mail lowarauenquiries@xyleminc.com**

Dimension specifications

Prefix Alpha single pump unit 5.5 bar

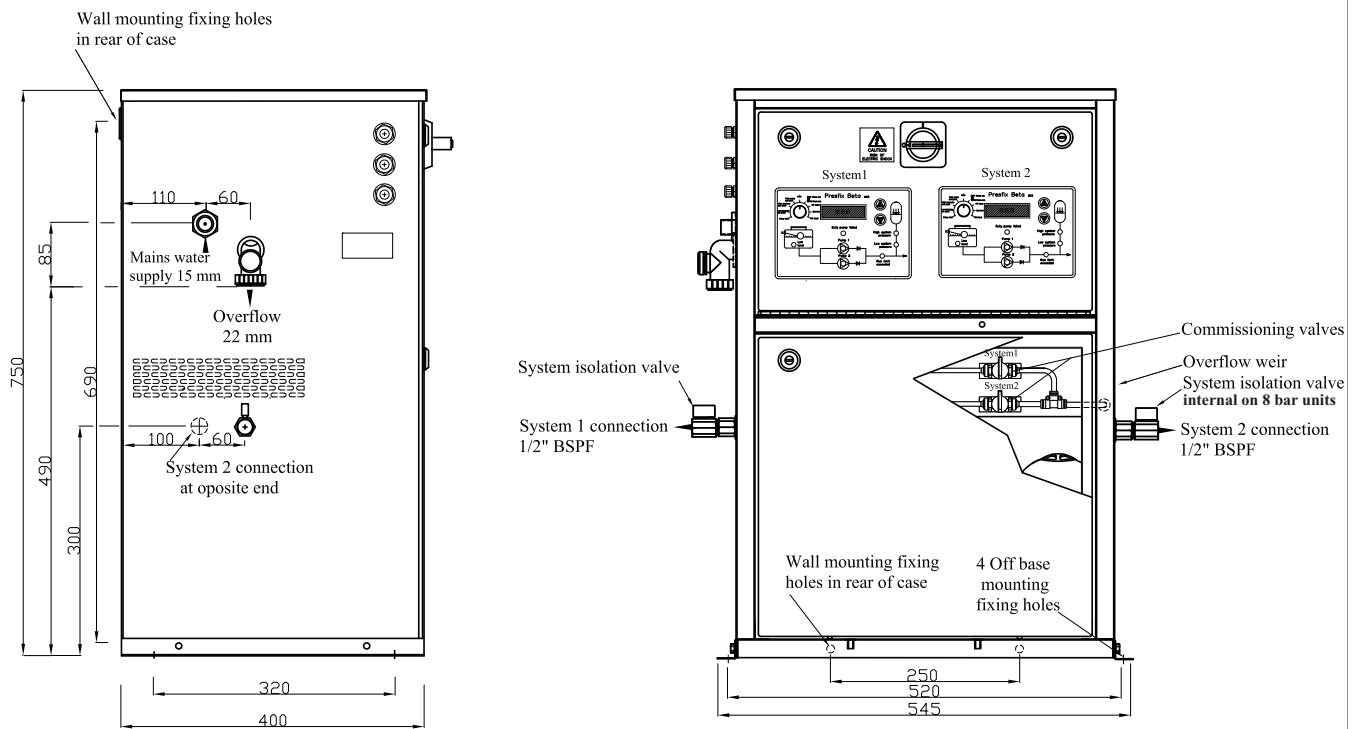


Prefix Beta MK 2 single & twin pump unit 2.8-5.5-8.0 bar



All dimensions in mm

Prefix Beta MK 2 dual system twin pump unit 2.8-5.5-8.0 bar



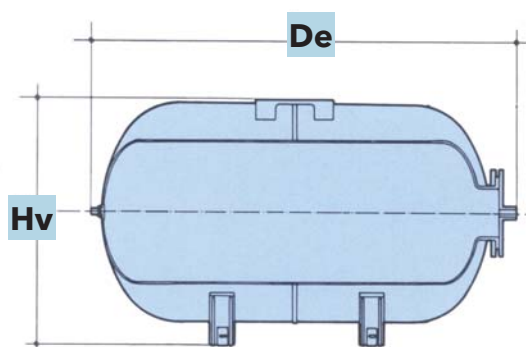
All dimensions in mm

Standard vessel details

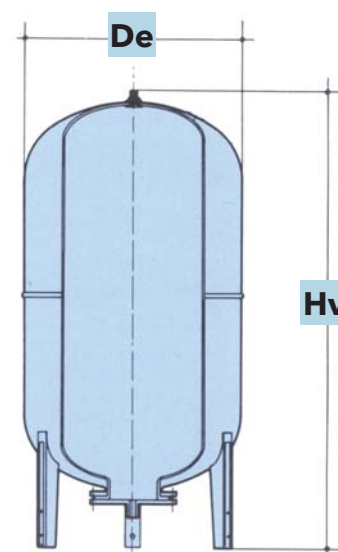


Maximum continuous operating temperature 70°C.

All vessels have replaceable diaphragms. Other vessels available on request.



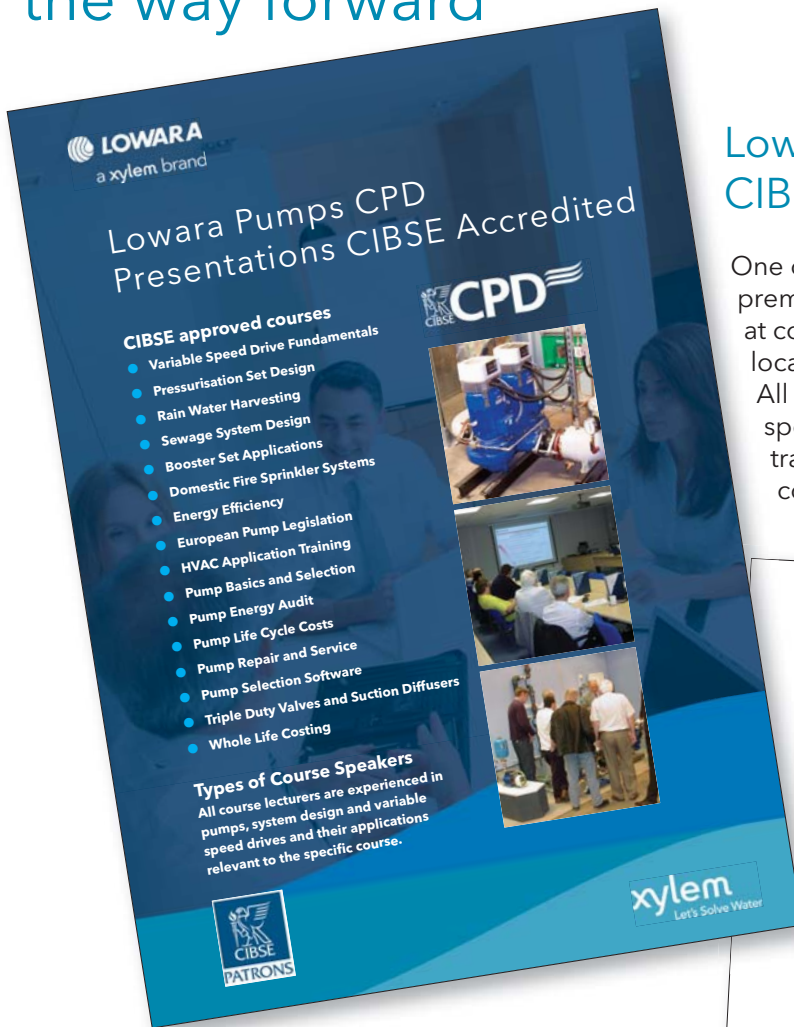
Horizontal



Vertical

Vessel volume litres	Pressure rating bar	Mounting type	Dimensions De mm	Dimensions Hv mm	Product code No.	Connection size	Weight Kg
24	10	Horizontal	480	290	UK1100002498	1"	8
60	10	Vertical	380	860	UK1100006043	1"	19
80	10	Vertical	450	800	UK1100008024	1"	21
100	10	Vertical	450	960	UK1100010037	1"	23
200	10	Vertical	550	1280	UK1100020039	1½"	62
300	10	Vertical	630	1430	UK1100030031	1½"	65
500	10	Vertical	750	1610	UK1100050027	1½"	97
750	10	Vertical	750	2267	UK1100050028	1½"	222
1000	8	Vertical	850	2100	UK1100100026	1½"	296
24	16	Horizontal	480	290	UK1100002495	1"	15
100	16	Vertical	450	960	UK1100010039	1½"	39
200	16	Vertical	550	1280	UK1100020041	1½"	69
300	16	Vertical	630	1430	UK1100030033	1½"	89
500	16	Vertical	750	1610	UK110005028	1½"	135

Xylem Water Solutions UK training... the way forward



LOWARA
a xylem brand

Lowara Pumps CPD Presentations CIBSE Accredited

CIBSE approved courses

- Variable Speed Drive Fundamentals
- Pressurisation Set Design
- Rain Water Harvesting
- Sewage System Design
- Booster Set Applications
- Domestic Fire Sprinkler Systems
- Energy Efficiency
- European Pump Legislation
- HVAC Application Training
- Pump Basics and Selection
- Pump Energy Audit
- Pump Life Cycle Costs
- Pump Repair and Service
- Pump Selection Software
- Triple Duty Valves and Suction Diffusers
- Whole Life Costing

Types of Course Speakers
All course lecturers are experienced in pumps, system design and variable speed drives and their applications relevant to the specific course.

CPD

CIBSE PATRONS

xylem
Let's Solve Water

Lowara CPD presentations CIBSE accredited courses

One or two hour CPD seminars, at the clients premises, half and full day training can be arranged at company HQ in Axminster, Devon or at any location in the UK.

All courses cover the pumps, systems and variable speed drives. Lowara also offer HVAC application training, all are taught by experts in the field and comprehensive course notes are provided.

Summary of type of courses and area of specialism offered

One or two hour CPD seminars, including lunch if preferred at the clients premises, half and full day training can be arranged at company HQ in Axminster, Devon or at any location in the UK. All courses cover the pumps, systems and variable speed drives. Lowara also offer HVAC application training, all are taught by experts in the field and comprehensive course notes are provided.

Target audience, including competence level

All levels of knowledge and experience catered for.

Duration and format of course

One or two hours or individual courses are arranged to cover ½ or full day training.

Course Locations

Client's own premises or HQ in Axminster, Devon.

All courses and attendance are free.



To arrange for any of the detailed presentations please contact:-

Xylem Water Solutions UK Limited
Millwey Rise Industrial Estate, Axminster, Devon EX13 5HU
Tel: 01297 630230 Fax: 01297 630270
lowaraukenquiries@xyleminc.com
lowaraukcbs@xyleminc.com
www.lowara.co.uk



LTC-in-house training, seminars and new product launches

With our Lowara Training Centre we provide a learning environment that promotes the transfer of new skills and knowledge to the work setting through both classroom and technology-based instruction. Our training team comprises experienced individuals throughout the organisation who have expert knowledge of our products, markets and services. We are available to assist you and your organisation to meet your training needs.

For up to date news on products, services and a complete calendar for training events and exhibitions please visit our web site www.lowara.co.uk

Xylem Water Solutions UK Limited
Millwey Rise Industrial Estate, Axminster, Devon EX13 5HU
Tel: 01297 630230 Fax: 01297 630270
lowaraukenquiries@xyleminc.com
lowaraukcbs@xyleminc.com
www.lowara.co.uk



Code: UK/IT/023 P02/13

Xylem

Xylem /'zīləm/

- 1) The tissue in plants that brings water upward from the roots.
- 2) A leading global water technology company.

We're approximately 12,700 people unified in a common purpose: creating innovative solutions to meet our world's water needs. Developing new technologies that will improve the way water is used, conserved, and re-used in the future is central to our work. We move, treat, analyze, and return water to the environment, and we help people use water efficiently, in their homes, buildings, factories and farms. In more than 150 countries, we have strong, long-standing relationships with customers who know us for our powerful combination of leading product brands and applications expertise, backed by a legacy of innovation.

For more information on how Xylem can help you, go to www.xyleminc.com

alcon
SOLENOID VALVES

Bell & Gossett®

FLOJET

FLYGT

godwin

GOULDS
WATER TECHNOLOGY

JABSCO

LEOPOLD

LOWARA

MIDLAND-ACS

multitrode

PCI
SERVICES

PIMS

REDJACKET®
Water Products

rule

SANITAIRE

VOGEL PUMPEN

WEDECO

xylem
Let's Solve Water

Xylem Water Solutions UK Limited

Millwey Rise Industrial Estate
Axminster, Devon EX13 5HU - UK
Tel: 01297 630230
Fax: 01297 630270
e-mail: lowaraukenquiries@xyleminc.com
<http://www.lowara.co.uk>
<http://xylemwatersolutions.com>

Xylem Water Solutions Ireland Limited

50 Broomhill Close
Airton Road
Tallaght - Dublin 24
Tel. (+353) 01 4524444
Fax (+353) 01 4524795
e-mail: lowara.ireland@xyleminc.com
<http://www.lowara.ie>

Lowara is a trademark of Xylem Inc. or one of its subsidiaries.
© 2013 Xylem, Inc.

Xylem Water Solutions UK Limited reserve the right to make modifications without prior notice.

Code UKLIT0013 P02/14

CPD
CIBSE

CIBSE
PATRONS

Member of
The PUMP
BPMA
Industry
association

MANAGEMENT SYSTEM CERTIFICATION
ISO 14001 OHSAS 18001
DNV