



Packaged Break Tank Booster Sets to Fluid Category 5

VARITANK - FIXTANK

Lowara packaged break tank booster sets designed to be both compact and cost effective

Varitank and fixtank booster sets have been designed to comply with the Water Supply (Water Fittings) Regulation 1999 and come as a complete package either mounted on a base plate or frame suitable for providing potable water.



Each package is completely assembled and wired to minimise the time taken on site for installation, especially important when the set is replacing an existing unit where down time must be kept to an absolute minimum so end users are not overly disrupted.

Each set has a type AB air gap which provides back flow protection to fluid Category 5.

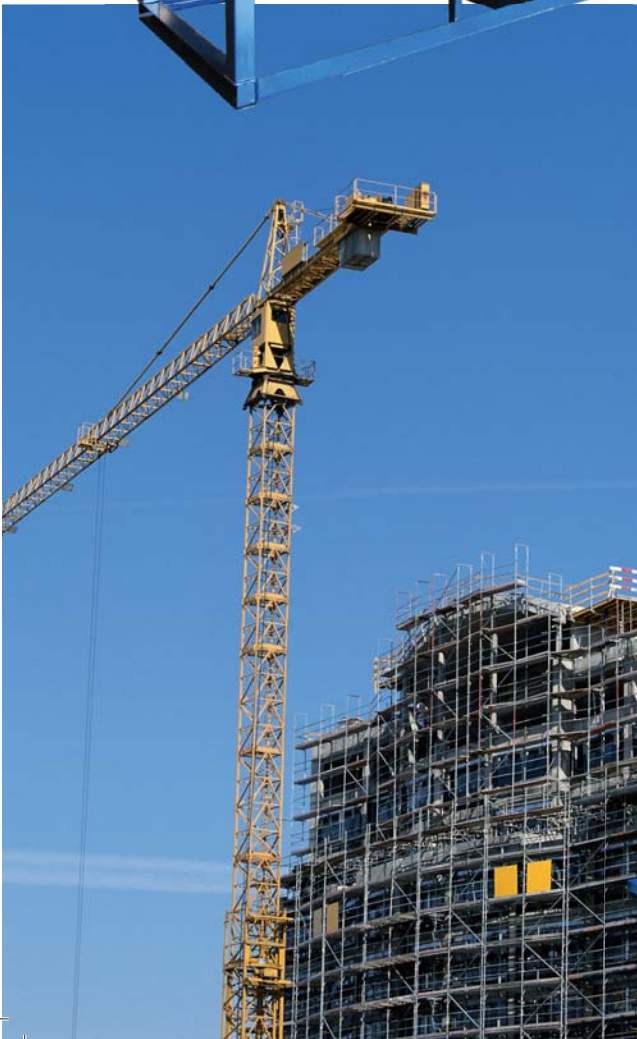
All tanks are WRAS approved.



All sets come complete with ball valve and float, ball valve housing (Except 250lt sets) weir slot overflow, warning pipe (on sets 1000lt and above), drain valve and low level float switch.

Applications

- Domestic
- Commercial
- Industrial
- Building services





Combinations of Base mounted sets available

- Single or twin pump (Single pump only on 55lt and 91lt tank sets)
- Variable or fixed speed
- e-SV vertical multistage pumps
- e-HM horizontal pumps
- Tank nominal volumes available: 55lt, 91lt, 250lt, 450lt, 680lt and 1000lt

Combinations of Frame mounted sets available

- Single or twin pump with three pumps available on larger break tank sizes
- Variable or fixed speed
- e-SV vertical multistage pumps
- e-HM horizontal pumps
- Tank nominal volumes available: 250lt, 450lt, 680lt, 1000lt, 1370lt, 1500lt, 2000lt and 3000lt

All the above sets except the 250lt are fitted with ball valve housings which provides the best usable volume from each tank.

Materials

- 55lt and 91lt bases manufactured from Galvanised steel
- All bases above 91lt and all frames are manufactured from mild steel and painted Lowara blue.
- 55lt and 91lt tanks are manufactured from un-insulated Polyethylene

250-3000lt one piece tank materials

- Tanks are manufactured from GRP (Glass reinforced Plastic)
- Pre-insulated with 25mm PU foam (polyurethane) completely encapsulated within a GRP laminate.
- The outer surface of the tank is coated with Polyester gel coat.
- Tank outlet pipework copper up to 50mm and PVC for all sizes above 50mm

Options available with GRP tanks

- Delayed action ball valves (Aylesbury type K)
- Equilibrium ball valves 28-100mm
- 50mm insulation
- Central division in tank
- High level switch
- Temperature gauge
- Contents gauge

Break tank selector switches are available with booster sets that have the break tanks that are split into 2 sections.



Water storage

Storing water has two main purposes,

1. To provide for an interruption in supply.
2. To provide sufficient volume to cover peak demands.

Design codes recommend that storage is provided to cover the interruption of an incoming mains supply, in order to maintain a water supply to the building.

Water supply companies are empowered to insist on specific terms including the volume or period of storage, within the terms of their supply agreement with a consumer, however many water supply companies only recommend that storage be provided in accordance with BS6700, placing the responsibility and decision firmly on the consumer.

The table below provides guidance on typical usage within a building over a 24 hour period.

The table also provides storage volume based on the % of daily demand when the water supply company or client has not dictated the period of cover.

Consideration should also be given to ensure that the break tank has sufficient volume to cover 50% of the design duty for a minimum duration of 10 minutes.

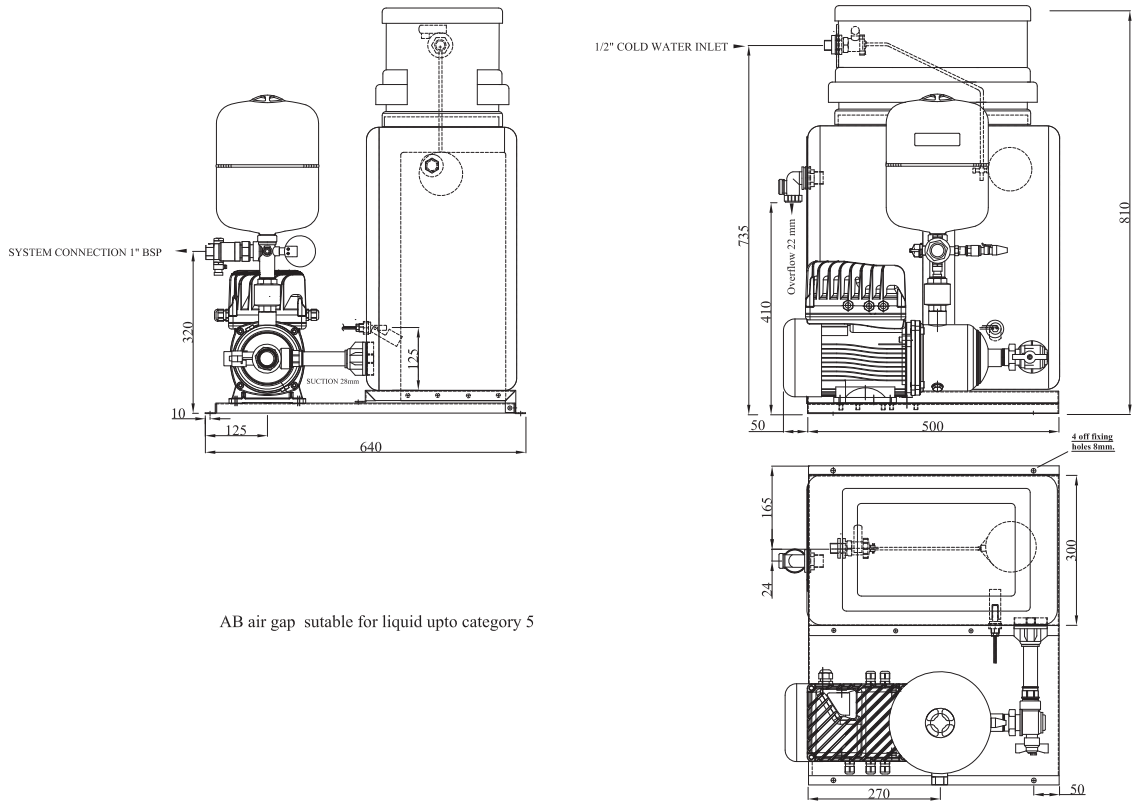
Typical usage and storage volume based on the % of daily use

Daily water demand (Litres)						24hr storage % of daily demand
Hospitals	District general	Surgical/ward	Medical ward	Paediatric ward	Geriatric ward	
Storage per bed	600lt	250lt	220lt	300lt	140lt	50%
Nursing homes	Elderly care	Elderly sheltered				
Storage per bed	135lt	120lt				50%
Dwellings	1 bedroom	2 bedrooms	3 + bedrooms			
Storage per bedroom	210lt	130lt	100lt			50%
Hotels/Hostels	Budget	Travel inn/lodge	4/5 star luxury			
Storage per bedroom	135lt	150lt	200lt			50%
Offices/Shops/Factory	With canteen	Without canteen				
Storage per person	45lt	40lt				50%
Libery, Musium, Art galleries	General					
Storage per person	6lt					25%
Cinema, Theatre	General					
Storage per person	3lt					25%
Bars, Nightclub	General					
Storage per person	4lt					25%
Sports facilities	Sports hall	Swimming pool	Field sports	All weather pitch		
Storage per person	35lt	20lt	35lt	35lt		25%
Schools, Colleges, Universities	Nursery/Primary	Secondary/college	Boarding			
Storage per pupil	15lt	20lt	90lt			50%

Varitank base mounted GTKS series dimensions

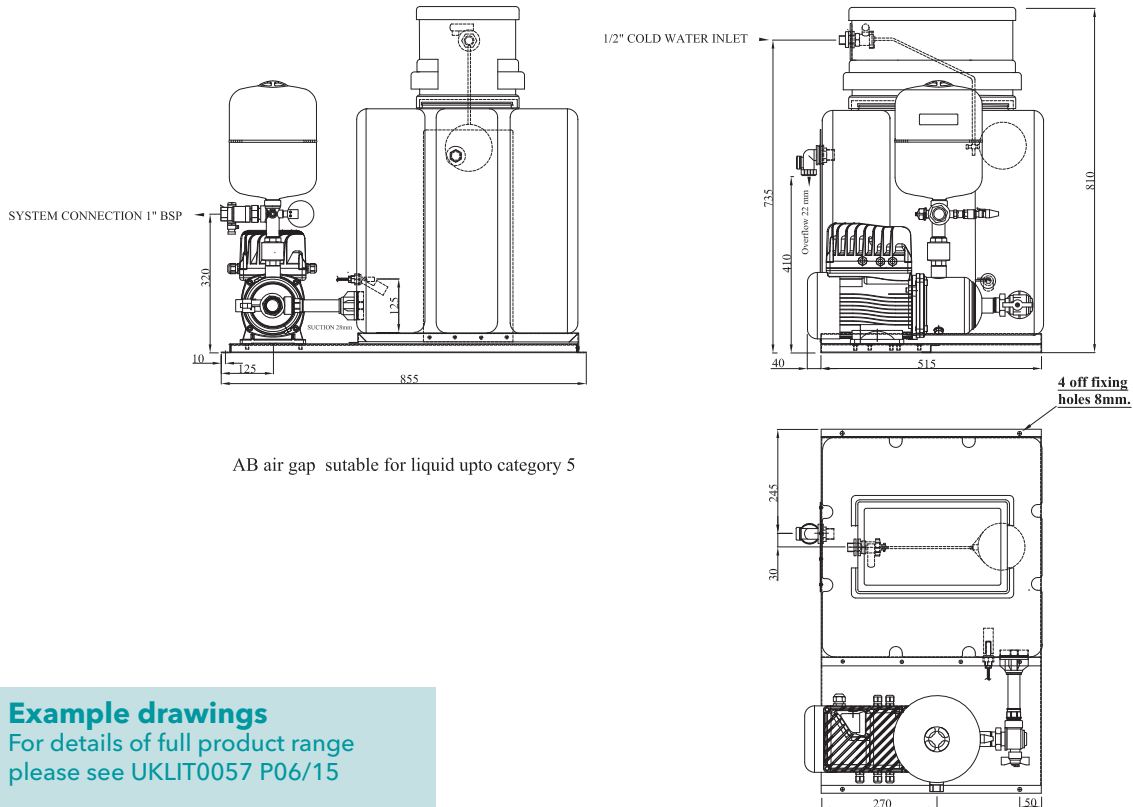
GTKS10 3HM04-05 with 55 litre break tank

Drawing number M10317A



GTKS10 3HM04-05 with 91 litre break tank

Drawing number M10351

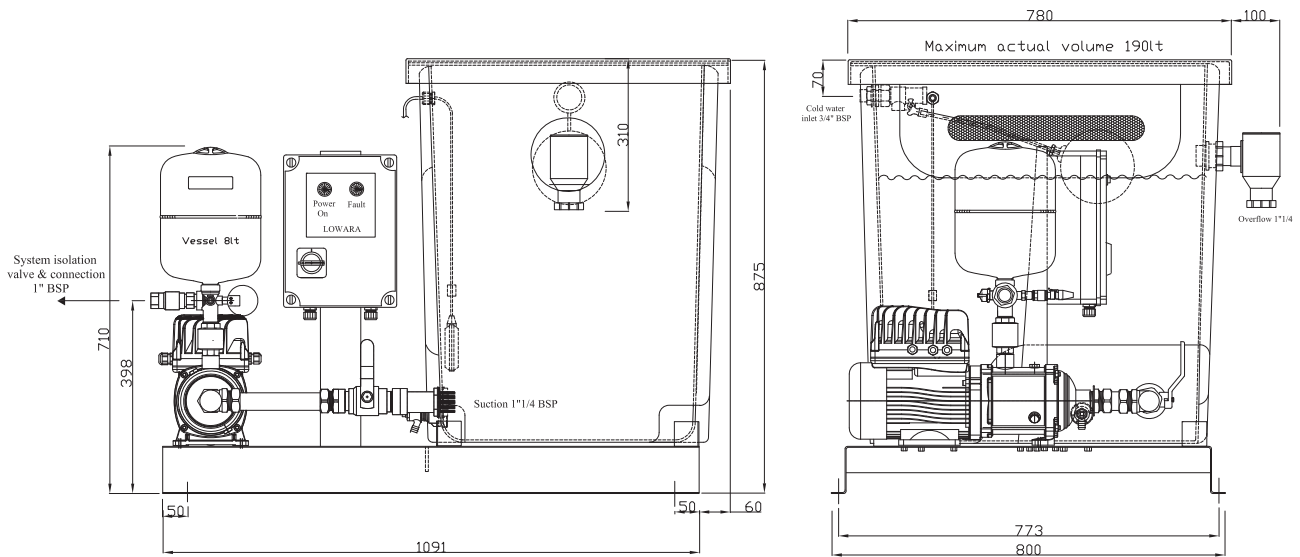


Example drawings
For details of full product range
please see UKLIT0057 P06/15

Varitank base mounted GTKS series dimensions

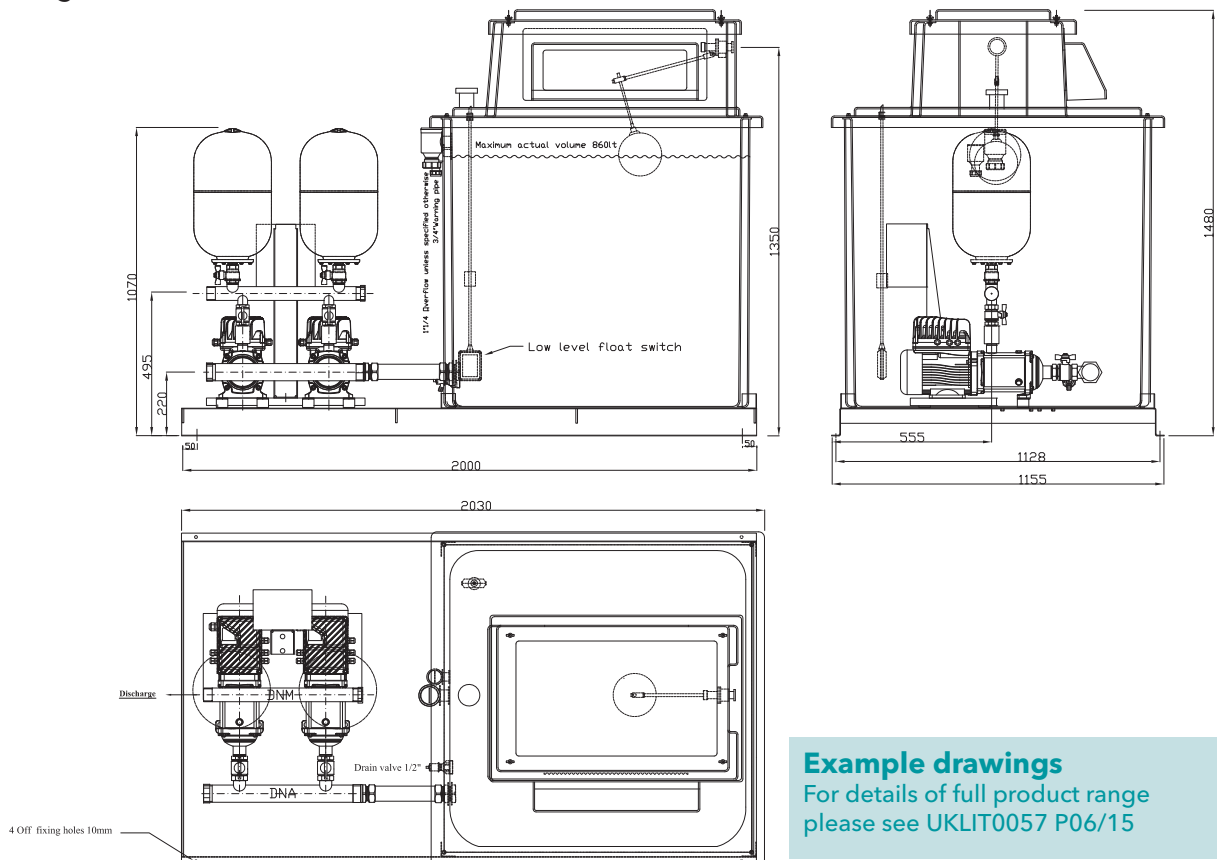
GTKS10 1-3-5HM02-08 with 250 litre break tank

Drawing number M10328



GTKS10 or GTKS20/1-3-5HM upto 8 stages with 1000 litre break tank

Drawing number M10473

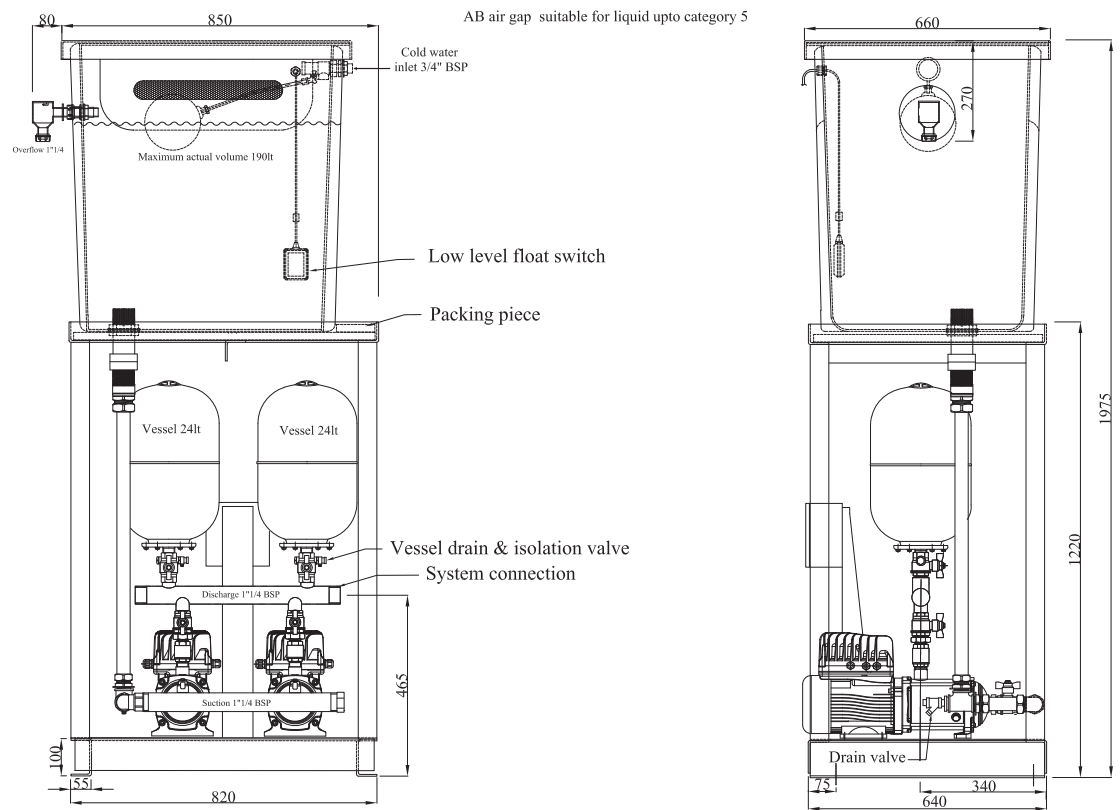


Example drawings
For details of full product range please see UKLIT0057 P06/15

Varitank frame mounted GTKS series dimensions

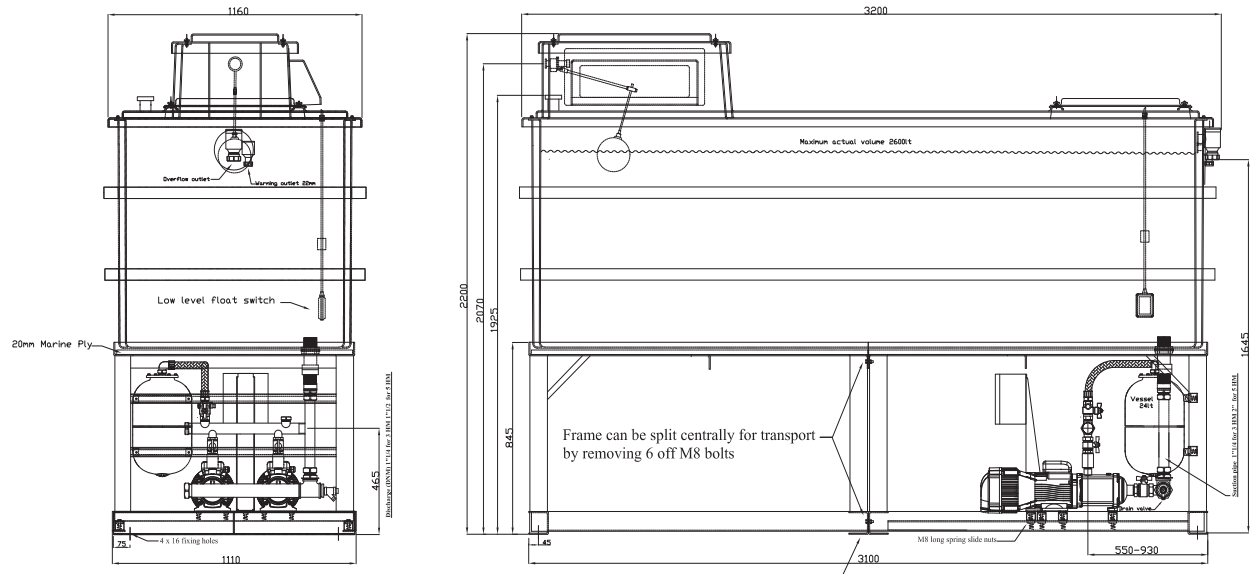
GTKS20/1-3HM up to 8 stages with 250 litre break tank

Drawing number M10364



GTKS20/3-5-10HM04-05 or GHV20-30/3-5-10-15HM all stages up to 16 bar with 3000 litre break tank

Drawing number M10402



Shim under frame feet where necessary to ensure the tank base lays flat and even on the support frame

Xylem |'zīləm|

- 1) The tissue in plants that brings water upward from the roots;
- 2) a leading global water technology company.

We're a global team unified in a common purpose: creating innovative solutions to meet our world's water needs. Developing new technologies that will improve the way water is used, conserved, and re-used in the future is central to our work. We move, treat, analyze, and return water to the environment, and we help people use water efficiently, in their homes, buildings, factories and farms. In more than 150 countries, we have strong, long-standing relationships with customers who know us for our powerful combination of leading product brands and applications expertise, backed by a legacy of innovation.

For more information on how Xylem can help you, go to xylem.com



Xylem Water Solutions UK Limited

Millwey Rise Industrial Estate
Axminster, Devon EX13 5HU - UK
Tel: +44 (0) 1297 630230
Fax: +44 (0) 1297 630270
Email: lowaraukenquiries@xylem.com
www.lowara.co.uk

Xylem Water Solutions Ireland Limited

50 Broomhill Close
Airton Road
Tallaght, Dublin 24 D24 - Ireland
Tel: +353 (0) 1 452 4444
Fax: +353 (0) 1 452 4795
Email: flygtlRL@xylem.com
www.xylemwatersolutions.com/ie

Xylem Water Solutions UK Limited reserves the right to make modification without prior notice.
Lowara, Xylem are trademarks of Xylem Inc. or one of its subsidiaries
© 2015 Xylem, Inc.

Code UKLIT0153 P09/15

